

Trinity All Through School

Taunton Road, Lee, SE12 8PD

<http://www.trinitylewisham.org/> T: 0208 852 3191

We have had several hugely successful open day events over the last 2 weeks. We had over 200 families look around during our open evening and a total of 300 families come around our 6 open mornings. We have our last 2 open mornings coming up this week. If your son / daughter was involved in helping us out please do congratulate them. They were a real credit to you and made us extremely proud. We had our head boy, Nicolas Bonisch, head girl, Janelle Orisa-Nwoke give speeches about their journey and aspirations. We also had two terrific Year 7 Trinitarians speak, Daniel Dennis and Ogechi Amadi-Ohuroguz – only 4 weeks into their school year and already speaking to an audience of 600. Our Chair of Governors, Moira Cuthbert also addressed the visitors. Throughout all the events we have been able to demonstrate the high standards we have at Trinity – the progress and effort of all our pupils has been amazing. We have had so many comments about the work ethic and positivity given off by our pupils during these visits – which shows they really are taking their learning seriously.

Can I give another reminder to parents about the power of the knowledge organisers? If pupils are spending the time, which is indicated on the inside of each knowledge organiser, recalling their content then the grades at the end of the first assessment period will be amazing. We do have Pre-Public Examinations coming up for year 11 straight after half term. All other year groups will be having assessments soon as well – so the more pupils focus on the Knowledge Organisers the better prepared they will be. If you spend time testing them do make a note in their recall books to show this has happened. Just reading the knowledge organisers is not enough – they need to be self-testing to ensure they are able to recall all the information they have learnt. Every Friday all pupils are given support within family group time to enable pupils to develop their skills to apply at home.

Last week the whole of year 10 had their employability day. We had many businesses in working with our pupils, giving them information about their career path and giving all our year 10's an interview opportunity. They all dressed in business wear and were ready for the challenges throughout the day.

We take the safety and wellbeing of all students, staff and visitors to the site extremely seriously. With that in mind, we have extensive procedures in place in the event of a fire or other external influences. All students have been briefed in assembly regarding what they should do in the event of the alarm sounding and they will be fully supported by staff throughout any incident. We had a fire drill across both the primary and secondary sites and the pupils were evacuated quickly and quietly in both instances last week. They behaved appropriately and took the drill extremely seriously. Please do talk to your son / daughter about the importance of listening to health and safety guidelines and to the need for them to keep themselves safe at all times.

Thank you again for all your support so far this year. Please do keep the pressure up with regards to progress and improving grades.

David Lucas



David Lucas

DIVERSITY DAY

FRIDAY 19TH OCTOBER

All Pupils to wear

traditional

or

cultural dress

from around the world

IMPORTANT DATES

HALF TERM

22nd to 26th October

School re-opens on

Monday 29th October

2018 at 08h30

DATES TO DIARISE

14TH NOVEMBER

EARLY SCHOOL CLOSURE

12H30

30TH NOVEMBER

SCHOOL CLOSED

INSET DAY

Chaplain's Corner



By Rev. Juliet Evans

"There were some shepherds in the fields, taking care of their flocks, and an angel of the Lord appeared to them. They were terribly afraid, but the angel said to them, "Don't be afraid! I am here with good news for you, which will bring great joy to all the people. This very day your Saviour was born—Christ the Lord!"
Luke 2:8-11

Recently in the church we celebrated St Michael and all Angels which means we have just enjoyed Angel week again in Trinity. Angel week is when we focus on being angelic - that is to be like the angels and to be messengers of good news. In our reading we hear of the angels bringing good news about the birth of Jesus. Rev Bridget asked us in worship this week to think about what kind of messages we send to others. We reflected that we need to keep what we say through conversation and social media positive rather than fall into the temptation to be unkind.

Loving God
As we remember your angels who brought good
news to the world
Help us to be positive in the way we
communicate to others.
May we all be angelic in Your service as
messengers of Your love.
Amen.



MORE IMPORTANT DATES

PERFORMING ARTS
Informal Performance
evening
Monday 12th November
18h00 – 19h00

15th November 2018
Y11 Certificate Evening
18h00 – 20h00
Year 11s from 2017-2018

20th November 2018
PARENT FORUM
11h00 to 12h00.

20th December 2018
CHRISTMAS CONCERT
19H00 – 20H00

21st December 2018
LAST DAY OF TERM School
re-opens on
Tuesday 8th January 2019

NEW CHAIR OF GOVERNORS

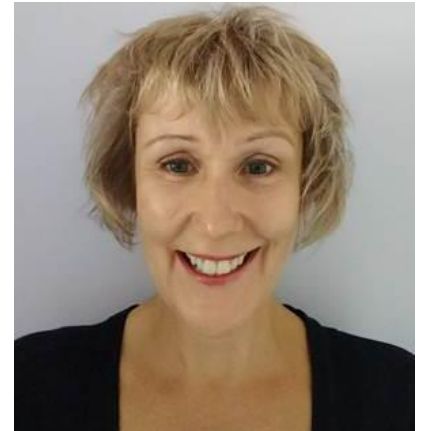
With the resignation of Bridget Prentice, Trinity's Chair of Governor for the past decade, a new Chair of Governors' was recently elected.

We are proud to announce that our newly appointed Chair of Governors' is Mrs Moira Cuthbert.

Here is a little about Moira in her own words.

My name is Moira Cuthbert. I live in Hither Green with my husband, two children aged 17 and 11, and my dog. My background is in Finance IT, and Learning and Development. I worked for a large company for over 20 years but now I run my own small businesses helping people with their finances and dog walking. You can see me every day and in all weather in Manor House Gardens, the park next to Trinity. I was the treasurer at a local charity, Lee Oasis, for 5 years as well as helping at both the children's PTAs. In fact I was on the first PAFT committee in 2012 and helped with the initial set up. In addition I have volunteered at my children's' Primary School running cooking classes and helping where needed.

My son left Trinity Secondary in the summer 2017 with a fantastic set of results and my daughter has just joined Y7. I moved from East London to Hither Green 20 years ago. I absolutely love living in this area and I enjoy supporting many local groups. I truly believe this is the greatest place to live. We are very lucky to have such brilliant local schools and I am keen to support them in every way I can so when I was offered an opportunity to be a Foundation Governor I was delighted to join. I am honored to have been elected Chair of Governors and I look forward to visiting the schools and learning as much as I can about life at Trinity. We have an exciting time ahead in becoming a truly all through school and I look forward to meeting as many of the Trinity Community as possible over the coming year.



Moira Cuthbert
Chair of Governors – Trinity All Through School

OPEN EVENING WEDS 3RD OCTOBER 2018



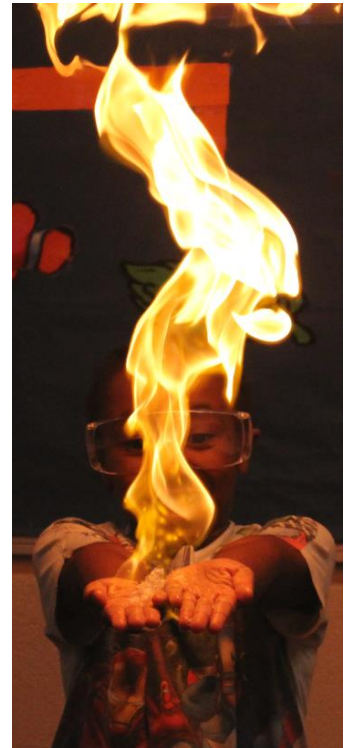
Trinity girls dissecting a heart



Creative Art session



Visiting young pupil
having a lesson in
trampolining



Fire Magic! In science



Budding young scientists

**Open Evening at Trinity
was a great success
The school was packed
with prospective
parents and children
interacting with Trinity
pupils and tutors**



Taking on the drums in Music



Trinity pupil in English classroom showing awesome work



Our talented pianist Morgan played the night
away

BISHOP KAROWEK — BLACK HISTORY MONTH



Mr Wynter, Mr Ludo with family and pupils of Trinity enjoy the Black History Month celebrations at Southwark Cathedral on Saturday 6th October.



HARVEST COLLECTION

Harvest collection
Helping hands Foodbank
Before 15th October



Items needed:

Milk (UHT)
Fruit juice (carton)
Tea bags/instant coffee
Tinned fish
Washing up liquid
Cooking oil
Tinned tomatoes
Rice/pasta
Cereals
Biscuits
Jam
Toilet rolls

We are starting our harvest collection (advertised through worship) this Thursday.

This year it is for the foodbank in St Peter's (one of Bridget's churches) called Helping Hands Foodbank.

They work with AFRIL (Action for refugees in Lewisham) to support people who are in desperate need in our community.

DONATIONS REQUIRED

Please send your donations in with your child to school.

WE NEED YOUR FEEDBACK!

Admissions Consultation:

We are very close to becoming a full through school – and very excited about this prospect. A lot of work has been happening with all the staff across both phases to ensure the process is smooth and so that many of the practices at the secondary work very closely with the primary to ensure the pupils move between year 6 and 7 without the usual turbulences of secondary transfer. For all the primary pupils there will be an automatic place at the secondary phase – you don't even need to fill in the common application forms. If you have a place at Trinity school you have a place across the complete age range. As a through school this is from year R to year 11. To ensure there is a smooth transition we have altered our admissions policy, to ensure it is transparent to all. We have to consult on these changes and we are starting the process now. The consultation has just opened today and will close at 12pm on Monday 26th November 2018 – giving over 7 weeks for feedback. Information has been sent to all neighbouring Local Authority Admissions teams / all schools across Lewisham / our parishes as well as being on our website and posted on social media / the local library and the community notice boards around Lewisham. Please do check out the new policy on our website and if you wish to make any comments please email using: consultation@trinity.lewisham.sch.uk. All feedback will be used by the governors to finalise the policy before we fully determine it ready for admissions next year. Thank you again for all your support.

The following pages contain our proposed Admissions Consultation and Supplementary information for 2020/2021

Consultation on Admission Arrangements for 2020/21

We are very close to becoming a full through school (education for pupils from the age of 4 to 16) – and are very excited about this prospect. A lot of work has been happening with all the staff across both phases to ensure the process is smooth and so that many of the practices at the secondary work very closely with the primary to ensure the pupils move between year 6 and 7 without the usual turbulences of secondary transfer. For all the primary pupils there will be an automatic place at the secondary phase – you don't even need to fill in the common application form. If you have a place at Trinity school you have a place across the complete age range. To ensure there is a smooth transition we have altered our admissions policy, to ensure it is transparent to all.

We are consulting on these changes to ensure the community help shape our policy. Those in the primary phase will automatically have the right to transfer to the secondary phase – and we will still have places left for those that did not come through our primary provision to get a place at Secondary level.

Please check our school website to read the proposed admissions policy and please email back any feedback you have. Email comments to

consultation@trinity.lewisham.sch.uk

Our website: www.trinitylewisham.org.uk

- Start of consultation 12pm Friday 5th October 2018
 - Length: 7 weeks (including half term)
- End of consultation 12pm Monday 26th November 2018



Trinity
Taunton Road
Lee, London
SE12 8PD

Tel : 0208 852 3191
Fax : 0208 463 0201

Executive Headteacher : Mr David Lucas

Trinity All Through

School Admissions Policy in 2020 / 2021

Consultation Document

- Start of consultation 12pm Friday 5th October 2018
- Length: 7 weeks (including half term)
- End of consultation - 12pm Monday 26th November 2018

Consultation to include: school website / school newsletter at both primary and secondary site / copy sent to the Local Authority who will circulate to all headteachers across the borough for consultation / copy emailed to the

Diocese and LA for consultation / copy emailed to Southwark, Greenwich, Bromley and Bexley School Admissions teams / notice placed on Sainsbury's community board and the local Library notice board / Social media used from the school Twitter account and the PAFT Facebook page.

**All feedback will be reviewed at a full governing body meeting on
Wednesday 28th November 2018**

If you wish to comment on this please email the school on:

consultation@trinity.lewisham.sch.uk

<i>Date</i> <i>Governor Approval</i>	<i>Date of next review</i>	<i>Notes</i>
<i>December 2017</i>	<i>December 2018</i>	<i>Determined in December 2017</i>
		<i>Draft policy written with support from Diocese Admissions consultant in June 2018. Full governors reviewed in September 2018. Admissions subcommittee finalised amendments at the start of October 2018. Consultation from October into November.</i>

Admission Policy for Secondary and Primary admission in 2020/2021

Trinity All Through School has a distinctive Christian character and provides an inclusive, caring and supportive environment where children learn and flourish in a setting shaped by the Christian scriptures, worship and values. We welcome applications from all members of the community and we ask all parents to respect the Christian character of our school.

The Governing Body is responsible for the admission of pupils to the school and admits a **total of 60 pupils into the Reception Year and 120 pupils into year 7**; the Year 7 figure includes those who wish to automatically transfer from Trinity All-Through Primary Phase (up to a maximum of 60 pupils). The minimum number of places offered to external applicants will therefore be 60. The admission number has been agreed between the Governing Body and the Local Authority.

Pupils transferring from Year 6 at Trinity All-Through Primary phase have automatic entry into Year 7 of the secondary phase. If there are fewer than 60 of Trinity Year 6 pupils transferring into year 7, the remaining places will become additional open places for external applicants.

The school is part of the locally agreed coordinated admissions scheme and the timescales for applications to be received and processed are those agreed with the Local Authority. If you are applying for a place in Year R or if your child does NOT currently attend Trinity Primary and you want a place in year 7 then you must complete your home borough's Common Application form (CAF) and return the form to the home Authority; if applying for a place at this school, parents must name this school as one of the preferences on the CAF. Parents who wish to apply for a foundation place must also send a **supplementary information form** to the school. The Governors will consider late applications in accordance with the procedure in the local authority's secondary admission booklet. **Children currently at Trinity Primary** automatically qualify for a place at Trinity Secondary, and if you want your child to keep attending this school **you do not need** to complete a CAF.

Parents of pupils who have EHCP (Education Health Care Plan) or statement of special educational needs SEN are required to apply for school places separately through the local authority from which advice is available. If a child with a statement or education and health care plan is placed in the school by the local authority before the normal admission round, the number of places available to other applicants will be reduced.

Parents applying for places do so knowing that Trinity All Through School provides an education based on

Christian principles. Applications can also be made on line at www.eadmissions.org.uk

Foundation Places (church place)

The Governors have designated 12 places in Reception and 20 places in year 7 as Foundation places for children who attend or whose parents attend a Christian place of worship (note 3). They are allocated according to the criteria below. Written evidence of an applicant's attendance at their place of worship is required at the time of application on the School's Supplementary Information Form, which must be endorsed by your priest / pastor / church leader. A supplementary information form must be sent to the school by the statutory closing date for applications:

?

Secondary School October in the year preceding that of required admission

?

Primary School 15 January in the year preceding that of required admission

It is the responsibility of the parent / carer to ensure the supplementary information Forms are returned by the deadline by hand or by post to **Trinity All Through School, Taunton Road ...**

If there are more applicants than the available foundation places, priority will be given in the following order:

1. Looked after or previously looked after children (note 1) attending or whose parent/carer is a regular and faithful worshipper (note 2) at an Anglican or other Christian Church (note 3)
2. Children or a parent/carer who is a regular and faithful worshipper (note 2) at St Swithun's Church (Hither Green), the Good Shepherd (Lee) and St Peter's Church (Lee)
3. Children or a parent/carer who is a regular and faithful worshipper (note 2) at a Church of England place of worship
4. Children or a parent/carer who is a regular and faithful worshipper at another Christian Church (note 3)
5. Children who live nearest the school. Distance from the school is measured by the local authority's school mapping system and measured from a central nodal point in the Primary/Secondary premises (as appropriate) using digitised mapping software, to a nodal point of the applicant's permanent home address.

Applicants unsuccessful under the foundation place criteria will be considered equally alongside other applicants for open places as part of the initial allocation procedure.

Open Places

The Governors have designated 48 primary places and at least 40 secondary places each year as open places. If there are fewer than 60 of Trinity Year 6 pupils transferring into year 7, the remaining places will become additional open places for external applicants. Priority will be given to:

1. Looked after children or previously looked after children (note 1)
2. Children who have a brother, sister or step or half siblings including fostered and adopted siblings living at the same home address attending Trinity all through School at the time of admission. Children with siblings in Year 11 who will have left Trinity at the time of the younger child's admission do not qualify.
3. Children who live nearest the school. Distance from the school is measured by the local authority's school mapping system and measured from a central nodal point in the Primary/Secondary premises (as appropriate) using digitised mapping software, to a nodal point of the applicant's permanent home address

Tie breaker

If there are insufficient places to accommodate all applicants qualified under one criterion, places will be allocated to those children who live the shortest distance from school; if applicants live equidistant from the school the Governing Body will draw lots to decide between applicants.

Deferred Entry into Reception

The School admits children to the Reception class in the September of the school year in which a child attains the age of 5 years. (The school year runs from 1 September to the 31st August.) All parents/carers are entitled to a full-time place for their child in the reception class from September, but may defer entry until the beginning of the term after their child is five years old (i.e., when the child reaches compulsory school age) or until the beginning of the summer term whichever is earlier. Children may attend part-time until their child reaches compulsory school age. Parents/carers who have been offered a place in the Reception Year at the School and wish to defer entry for their child and/or attend part-time must put this in writing to the headteacher at the earliest opportunity and before the start of the autumn term.

Education Outside Chronological Age Group

Children are normally educated in school with others of their age group; however, in exceptional circumstances parents/carers may seek a place outside of their child's normal age group. Decisions will be made on the basis of the circumstances of each case. Parent/carers must state clearly why they feel admission to a different year group is in the child's best interests and may provide recent professional evidence to support this. Further details of how to make such a request are available from the school. **Waiting list**

The School operates a waiting list which is ordered in accordance with the oversubscription criteria. The waiting list is held until the end of the autumn term in the admission year. Parents may request in writing to join the waiting list.

Appeals Procedure

The Local Authority write to Parents / Carers of all applicants on 1st March for Secondary and 16th April for Primary giving details of the school to which their child has been allocated, and the contact details of the school should the family wish to appeal.

Appeals should be put in writing to the Clerk of the Appeals panel care of the school by the appeals deadline and clearly state the grounds for the appeal. The school has adopted the same appeals deadline as the Local Authority Community Schools, which vary from year to year but published in the Local Authority Secondary Transfer Booklet. Appeals will be heard by an Independent Appeals Panel before the end of the summer term.

Should a vacancy arise at the school before the Appeals Panel meets, the school will allocate the vacancy to an applicant in accordance with its published oversubscription criteria. **Fair Access**

The School is committed to taking its fair share of pupils who are hard to place in accordance with the locally agreed fair access protocol. Pupils admitted under the protocol will take priority over any children on the waiting list and this may include, on occasion, admitting above the planned admission number.

Notes

1) Looked After Children or previously looked after children but immediately after being looked after became subject to an adoption, child arrangements, or special guardianship order. A looked after child is a child who is in (a) the care of a local authority, or (b) being provided with accommodation by a local authority in the exercise of their social service functions (see definition in Section 22 (1) of the Children Act 1989).

2) A 'regular and faithful worshipper' is someone who has attended church at least once a month over the preceding two years immediately prior to application.

3) Another Christian Church is defined as a Church (or a denomination or a group of churches) that is a member of Churches together in Britain and Ireland or the Evangelical Alliance



Taunton Road
London
SE12 8PD

Leahurst Road
Hither Green
SE13 5HZ

Tel : 020 8852 3191
Fax : 020 8463 0201

Tel : 020 8463 0201
Fax : 020 8463 0201

SUPPLEMENTARY INFORMATION FORM

Parents should fill in this form **only** if they are applying for a **Foundation** (Church) place. The completed form should be returned to the school by 12h00 on 31 October (for Secondary applications) and 15th January (for Primary Applications) prior to the September when admission is required.

Failure to return this form will mean your application can only be considered under the Open (Community) places. You must **also** complete the Common Application Form available on-line or in printed format from your Local Authority. The Common Application Form should be returned directly to your Local Authority.

*Please note that **you are responsible** for checking that Trinity has received this supplementary information form to be considered for a foundation (Church) place.*

SECTION A - To be completed by the Parent/Carer. *Please fill all information in **BLOCK CAPITALS***

Child's First name:		
Child's Surname:		
Gender (please circle)	Male	Female
Child's date of birth (format: dd/mm/yyyy)	/	/ 20
Parent's/Carer's Full name		
Address		
Postal Code :		
Parent/Carer Email Address		
Home Landline number		
Mobile Number		
Name of Church		

*Please ensure your priest/minister/pastor completes the rest of this form and that you return this (all forms must be returned by 31 October (Secondary) or 15 January (Primary) to **Trinity Secondary School in Taunton Road SE12 8PD***

For Office use only

Secondary / Primary School	TS	TP
Church of England		
Other EA/CTBI Church		
Church Other		
Sibling	Yes	No

SECTION B - This section is to be completed by the parish priest, minister or pastor of your local church, or church you attend.

NOTE FOR CLERGY

We try to carry out the difficult task of applying the admission criteria with as much fairness and understanding as we can and we appreciate your help.

We ask that you complete the questions below as fully as possible. Please would you then send the form directly to the school to enable the applications to be considered against the criteria set down in the School's Admissions Policy which can be found on our website: **www.trinitylewisham.org**

The information that you supply will be used to help the admissions committee to decide if a place may be offered to the child named overleaf. The information is confidential, but may be seen also by the Appeals Committee in the event of an Appeal.

Only churches which are members of Churches Together or the Evangelical Alliance qualify for church attendance. Please check on their websites if you have any doubt. All major denominations and many groups of churches do belong.

Please complete by ticking the appropriate response:

1. Has the child named or their parent/carer worshipped in your Church for two years or more immediately prior to application?

Yes		No	
-----	--	----	--

2. Have they attended church at least once a month for this two year period?

Yes		No	
-----	--	----	--

Only children in families where attendance is once or more a month for two years immediately prior to application are eligible for a Church place.

Your Name:

Name of Church:

Denomination:

Telephone number:

Website address:

Church Stamp (if available)

Is your Church a member of:

Churches Together in Britain &
Ireland

The Evangelical Alliance

Yes		No	
Yes		No	

If your church is not a member of Churches Together or the Evangelical Alliance this application cannot be considered for a church place.

Signature of priest/minister/pastor:

Date

UPDATE ON EX-TRINITY PUPIL

In 2015 Eunice Adeoyo, Head Girl of Trinity All Through school was awarded a prestigious scholarship to Lancing College in East Sussex. In her second year at Lancing College she successfully achieved the position of Head Girl. Eunice is a local girl to Lewisham and was a diligent pupil at Trinity and also a Head Girl.

She has now successfully passed her A levels with flying colours enabling her to obtain a full scholarship to Cambridge University. She will be reading English Literature. As her first day loomed Eunice asked if we could assist her with transporting her and her belongings up to Cambridge University as her mother unfortunately was unable to. Our trusted Librarian and ex mentor for Eunice, Mr Jon Clairmonte undertook to assist and Eunice was transported safely to her residence at Cambridge. We will update you further with progress.



Eunice's arrival at Cambridge University. Her first day.



PARENTS & FRIENDS OF TRINITY (PAFT)

PAFT

We have opportunities for every parent who would like to be influential in raising money for our school. We also are invested in obtaining much needed resources for our school. We would love to have volunteers. Please contact Nicole on 07920 448 224 or join us on our Facebook Page (Parents And Friends of Trinity PAFT) for the latest events!

QUIZ NIGHT



SAVE THE DATE! **Trinity Quiz Night**

*** Evening of Friday 16th November ***

A fun social event organised by PAFT where

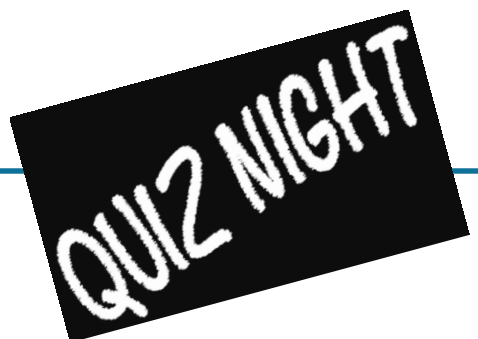
Parents, carers and teachers from both

Primary and Secondary team up on trivia!

Drinks. Food. Fun. Meet & Mingle.

Tickets on sale soon!

(All profits to the school)



HITHER GREEN RAIL CRASH MEMORIAL

Dear All,

Further to my email a couple of weeks ago, I'm writing to confirm that Southern Rail have now given permission for a memorial board to be installed, and a short service to take place at 11am on Monday 5th November, at Hither Green Station. This will include an unveiling of the memorial, with the names of those who died in the crash.

Please feel free to publicise the date and time of this service to anyone in your networks.

Best wishes,

Bridget Shepherd
Vicar of the Good Shepherd & St. Peter's, Lee

Congratulations!!

The following pupils passed their Summer Music Exams



Katherine Lindsey – Grade 2 Drums (Distinction) and Maina Dias-Niang – Grade 3 Guitar

Year 8 travel the World in Music

This term sees Year 8 visit a different country every week in Music. From Africa to Brazil to Trinidad and Tobago so far, with this week having an amazing experience in the Indonesian islands of Java and Bali!

Every week we explore the musical styles of another country to learn about the culture and musical features of their characteristic styles, we will continue on to Japan, India and Jamaica.

The whole of year 8 were therefore fortunate enough to experience playing as a real Indonesian Gamelan Orchestra with a workshop led by the award winning Inspireworks. By the end of the workshop they were able to talk about the culture and respect around music as well as perform a traditional piece of music.



DRAMA - This year we are delighted to have Drama back on the curriculum and pupils at Trinity are loving this opportunity to express themselves.

We are already making fantastic connections with theatres and companies across London which will bring many opportunities to our doors.



This week saw Lewisham Youth Theatre visit us to provide a technical workshop with another in Performance being delivered next week.



Primary Phase, Trinity All Through School

Achieve the Inclusion Quality Mark!

In the summer term, the Primary Phase were visited by an assessor from the Inclusion Quality Mark team to see how inclusive our school is and see if we were able to achieve the Inclusion Quality Mark. This is a highly valued award that provides external validation of our inclusive status.

We are pleased to announce that we have achieved this award and are now recognised for our 'ongoing commitment to provide the very best education for all children irrespective of differences'.

The full report can be found on the Inclusion page of our website, however below are some of the highlights from the report.

The children '*know that the **staff want to do the best for them**. They are happy and look forward to coming to school every day. They **feel valued and respected**. They are strongly supported in all areas of the curriculum by **passionate and dedicated staff**'.*

*They feel **inspired** in their learning by the **highly imaginative teaching**.*

***Progress is carefully monitored** and staff know **immediately** if more input is needed.*

*There is a sense of mutual respect and the **behaviour of the children is a strength of the school**. They are courteous to each other and restorative justice is deeply embedded. They know that if they have made a wrong choice **they have the opportunity to make things right**.*

***Parents feel that they are listened to** and the school has fostered a **real partnership** ensuring both parties share the process of educating their children.*

***The staff work tirelessly** to ensure their needs are met and the **families feel reassured**.*

Kind regards,

Darren Janes

Head of School, Primary Phase

Trinity All Through School



TRINITY'S MENTAL HEALTH TEAM

Your Mental Health First Aiders are



MR Gallears
Deputy Headteacher
Lead on Mental Health



MS Simpson



MS Lewis



MS Dillon

There are plenty of different types of support out there, and a Mental Health First Aider can help you access them.

Mental Health First Aiders are a point of contact if you, or someone you are concerned about, are experiencing a mental health issue or emotional distress. They are not therapists or psychiatrists but they can give you initial support and signpost you to appropriate help if required.

Training provided by



MHFA England
mhfaengland.org

If you have any questions about Mental Health First Aid at please contact

Trinity Second Phase
Miss Dillon

ASTHMA SYMPTOMS



wheezing



cough



shortness
of breath



tachycardia



difficulty
breathing



pale and
wet skin



dyspnea



chest
tightness

DOES YOUR CHILD SUFFER FROM ASTHMA?

PLEASE READ

Trinity now encourage pupils to carry on them at all times their asthma pumps. If your child suffers from asthma (even mild asthma) please ensure and check regularly that they have their pump in their school bag.

All pupils who have been diagnosed with Asthma (even if they have not had an attack for a long time) must be noted on our system as asthmatic. Please do inform us if your child is asthmatic or has been diagnosed with asthma and whether he/she has an asthma inhaler. The school does have generic inhalers for emergencies should your child have an attack and for unknown reasons does not have their own personal inhaler or it has run out. Ultimately we need each pupil who is asthmatic to carry their own inhalers. Our sports department carry generic inhalers when off site for such emergencies.

Please also ensure that the inhalers are in-date and not expired.

Any medical condition your child has currently or may develop during their time at Trinity and involves medication **MUST** be advised in writing to the Admin Office. This is then recorded onto our system and where necessary escalated to relevant staff.

Your co-operation is much appreciated.



Anaphylaxis Guidance

Definition: Severe and life threatening allergic reaction which requires immediate attention (AllergyUK, 2017).

Signs and Symptoms:

- Persistent cough
- Hoarse voice
- Difficulty swallowing
- Swollen tongue

- Difficult or noisy breathing
- Wheeze
- Persistent cough

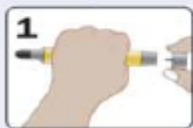
- Persistent dizziness
- Pale or floppy
- Suddenly sleepy
- Collapse
- Unconscious

(Please note signs and symptoms of presentation may not be limited to these)

If ANY ONE of these signs is present:

1. **Lie child flat.** If breathing is difficult, allow to sit.
2. **Give EpiPen** (follow the instructions below)
3. **Dial 999 for an ambulance** and say **ANAPHYLAXIS** (ANA-FIL-AX-IS).

How to give EpiPen® or EpiPen® Jr



Form fist around EpiPen® and PULL OFF GREY SAFETY CAP.



PLACE BLACK END against outer mid-thigh (with or without clothing).



PUSH DOWN HARD until a click is heard or felt and hold in place for 10 seconds.



REMOVE EpiPen® and DO NOT touch needle. Massage injection site for 10 seconds.

After giving EpiPen:

1. Stay with child, contact parent/carer.
2. Commence CPR if there are no signs of life.
3. If no improvement **after 5 minutes, give further EpiPen** or alternative adrenaline auto injector device, if available.
4. If the child has asthma give 10 puffs salbutamol (blue inhaler) via spacer.

**You can dial 999 from any phone, even if there is no credit left on a mobile. Medical observation in hospital is recommended after anaphylaxis.*

ATTENTION ALL PARENTS/CARERS

LOST PROPERTY AT SCHOOL

EVERY FRIDAY LOST PROPERTY WILL BE ON DISPLAY IN THE ATRIUM. PLEASE ASK YOUR CHILD TO RECLAIM IF ANY ITEMS HAVE BEEN LOST.

AT THE END OF EACH MONTH ALL ITEMS THAT REMAIN UNCLAIMED WILL BE DISPOSED OF / RECYCLED.

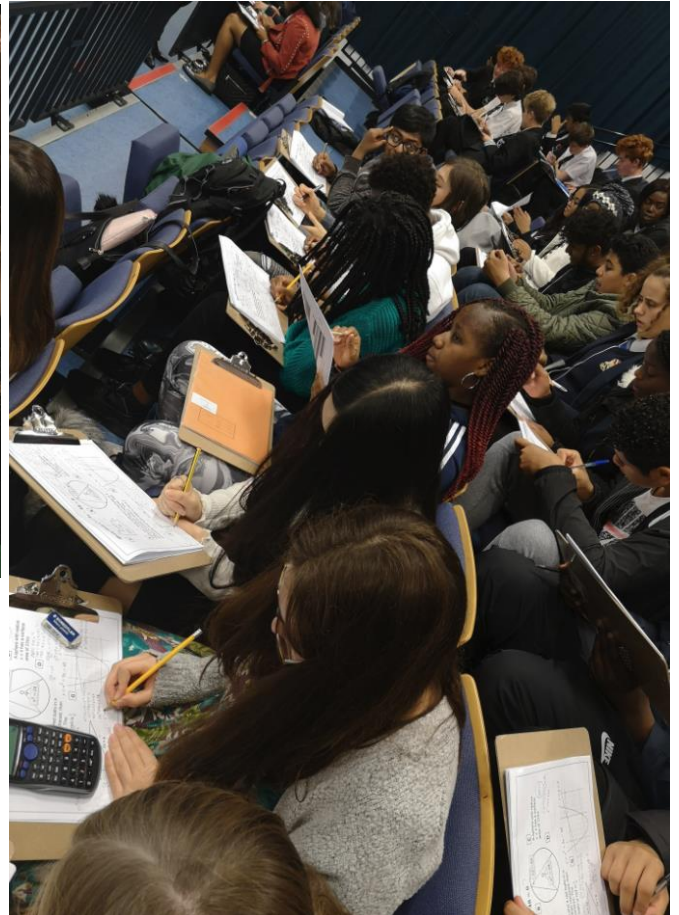
FOLLOW US ON TWITTER



Trinity Lewisham@news4trinity

ATLAS MATHS

Year 11 pupils working collaboratively to tackle "show that" styled questions during the launch of the ATLAS Math's Education higher attainers' event.



All heads
deep in
work



Taliq Osimen volunteered to demonstrate, to the audience of pupils from across the borough, how he arrived at his solution.

Taliq volunteered to share his answer